



POS M GIS / GIS Server Installation Guide

3 Steps

Created by POS M
Software

Last Updated
December 6, 2022

Creation Date
November 21, 2022

1. Introduction

POSM Server is a 2-way GIS connection between POSM Software GIS License and a Map. It is having 4 main components:

1. Inspections truck: Gathers all data from the field
2. POSM Server location: Two subcomponents
 - a. SQL Server: Gathers all relational information
 - b. File server: Stores all media in the same folder that POSM executable is located. POSM doesn't hold multiple video locations, it uses the video folder located in the same POSM.exe folder
3. Web Server: Vehicle to share, connect and visualize all POSM Information, reports and media
4. GIS Software: POSM connects to a Map to visualize tailored information on the map (NASSCO Scores, pipes inspected, Pipes with certain faults, etc.)

2. Requirements

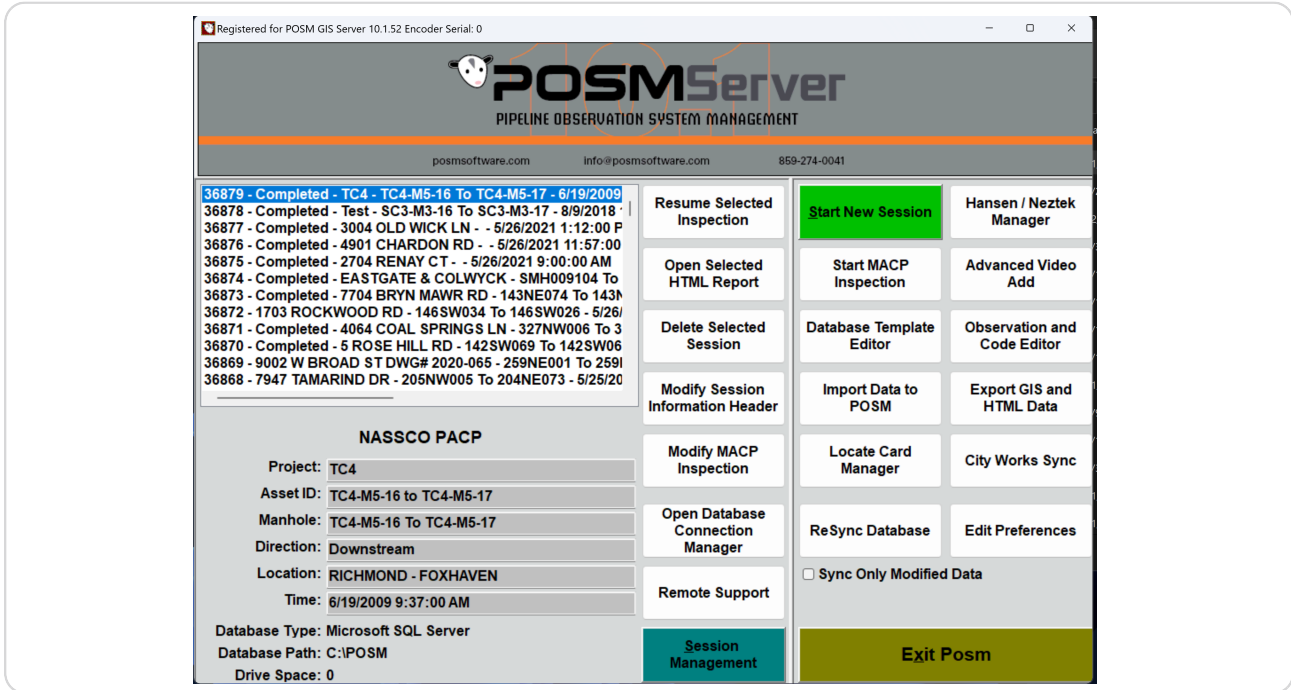
POSM Server license requires a SQL Server Installation (can be SQL Express Edition) and a file server that can contain the actual data size and the forecasted requirements for the next years to come.

3. Installation steps

1. POSM Install: (Please refer to the local installation document)
2. POSM GIS Server Key: POSM needs to be keyed as POSM GIS license to be able to connect to a SQL Server, generate all the HTML Reports automatically and update the GIS Information on the map. The POSM Server license looks like this:

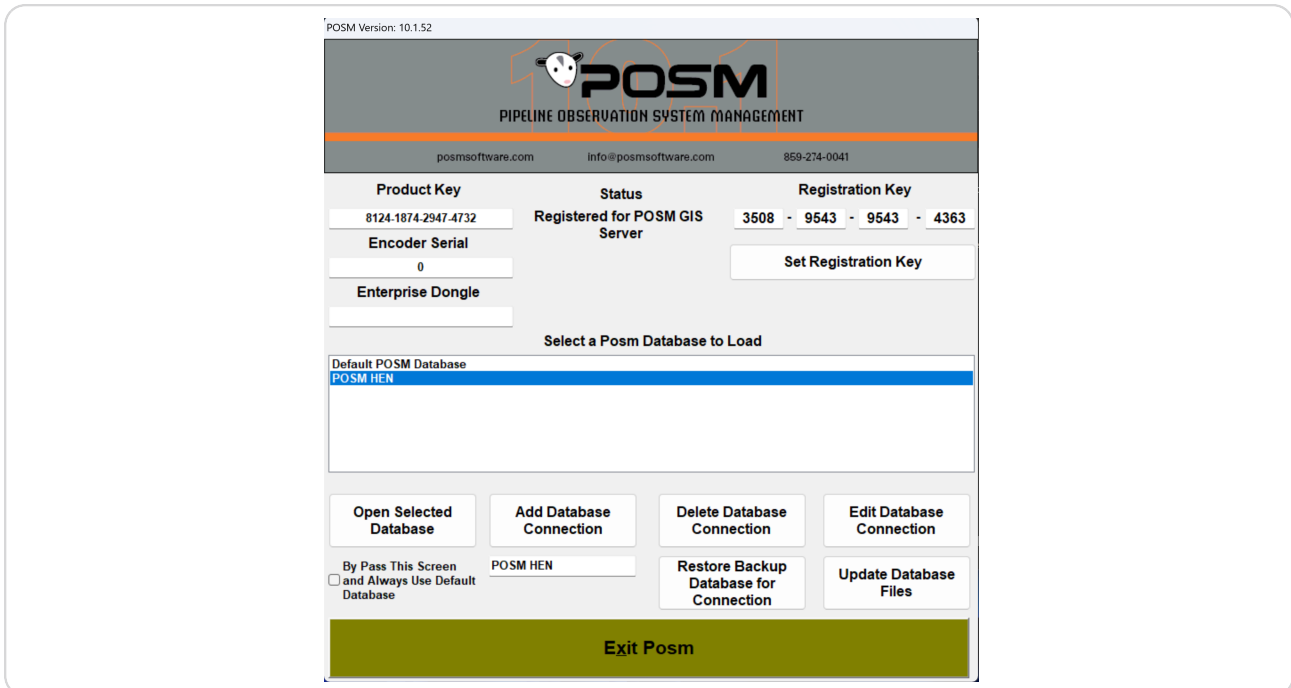
STEP 1

Open your POSM and click Open Database Connection Manager



STEP 2

POSM SQL Connection Set up To connect to SQL Server you would need to go to "Open Database Connection Manager" and select add a new connection:



STEP 3

Select Connection type "SQL Server" in case the Database is not encrypted, if it is you can select "SQL Server DB18":

POSM uses port 1433 for SQL Server so it's necessary to check the open ports for this Server and Instance and make sure they are in port 1433.

When the credentials are Windows Authenticated you can leave blank the username and password and it will connect using them.

After all, is good you can press the Save and close button and POSM Is ready to be used.

Add Posm Database Connection

Connection Type
 MS Access
 SQL Server
 SQL Server DB18

A Posm Server License must be purchased to add SQL Server connections

Cursor Type
 Client
 Server

Connection Name: POSM Connection name

Path: "Where POSM.exe is located"

Server: "Server Name"

Database Name: "POSM DB Name in SQL Server"

Username: sa

Password: **

Note: To use Microsoft Integrated Trusted Security for SQL Server connections leave both username and password blank. To enable Encryption add ;Encrypt=yes to Server or Database Name.